



Introducing Swedish Customs



2012 in figures

Like many other public agencies, Swedish Customs is financed through state appropriations. The appropriation for Swedish Customs for 2012 was SEK 1.6 billion. In 2012, Swedish Customs collected approximately SEK 64,5 billion from customs duties, taxes and other charges, and performed 99 000 physical checks.

Managing the Trade

Swedish Customs is working to simplify customs procedures and make them more efficient and secure. Helping business and citizens to do things correctly from the start is one way to secure revenue.

Total number of customs declarations	5,181,000
Export declarations	2,110,000
Supplementary declarations, import	1,083,000
Normal procedure, import	1,142,000
Simplified declarations, import	475,000
Transit conveyance, commenced in Sweden	242,000
Transit conveyance, terminated in Sweden	131,000
Number of applications for authorisation processed	7,861
Percentage of electronic transactions	99%
Percentage of automatically cleared import and export transactions	87%
Percentage of manually cleared import and export transactions	13%
Number of post clearance examinations	6,649
Number of questions answered by Swedish Customs' information service	115,233
Number of external courses and information meetings	329

Law Enforcement

Swedish Customs law enforcement work aims at preventing illegal goods from crossing the borders and therefore we conduct checks of travellers, goods and vehicles.

Number of seizures and temporary seizures	13,600
Khat	11,608 kg
Cannabis	1,504 kg
Amphetamines incl. methamphetamine	172 kg
Cocaine	26 kg
Heroin	6 kg
Opium	4 kg
Doping preparations	328,078 tablets
Ecstasy	20,241 tablets
Other narcotics incl. narcotic medicine	1,049,665 tablets
Alcohol	687,093 litres
Tobacco	26,635,844 cigarettes
Crime investigation	
Number of cases handed over to the public prosecutor	10,603
Number of years of imprisonment imposed for serious crime	501
Number of people convicted for serious crime	147
Number of eliminated or severely disrupted criminal networks	10



The mandate of Swedish Customs

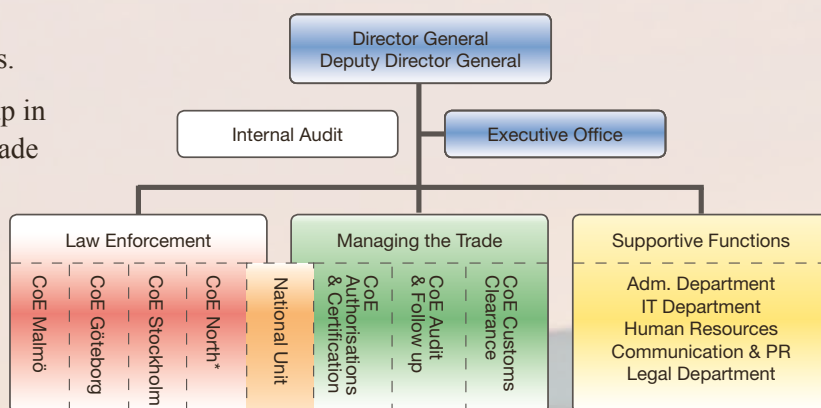
We have a mandate from the Swedish Parliament and Government to collect customs duties, VAT and other charges. We monitor and control traffic to and from other countries to ensure that regulations governing the import and export of goods are complied with. We contribute to the financing of the public sector and a well-functioning society.

The mandate also includes facilitating trade with countries outside the EU for Swedish companies and citizens and making it more difficult for criminals to smuggle illegal goods into the country.

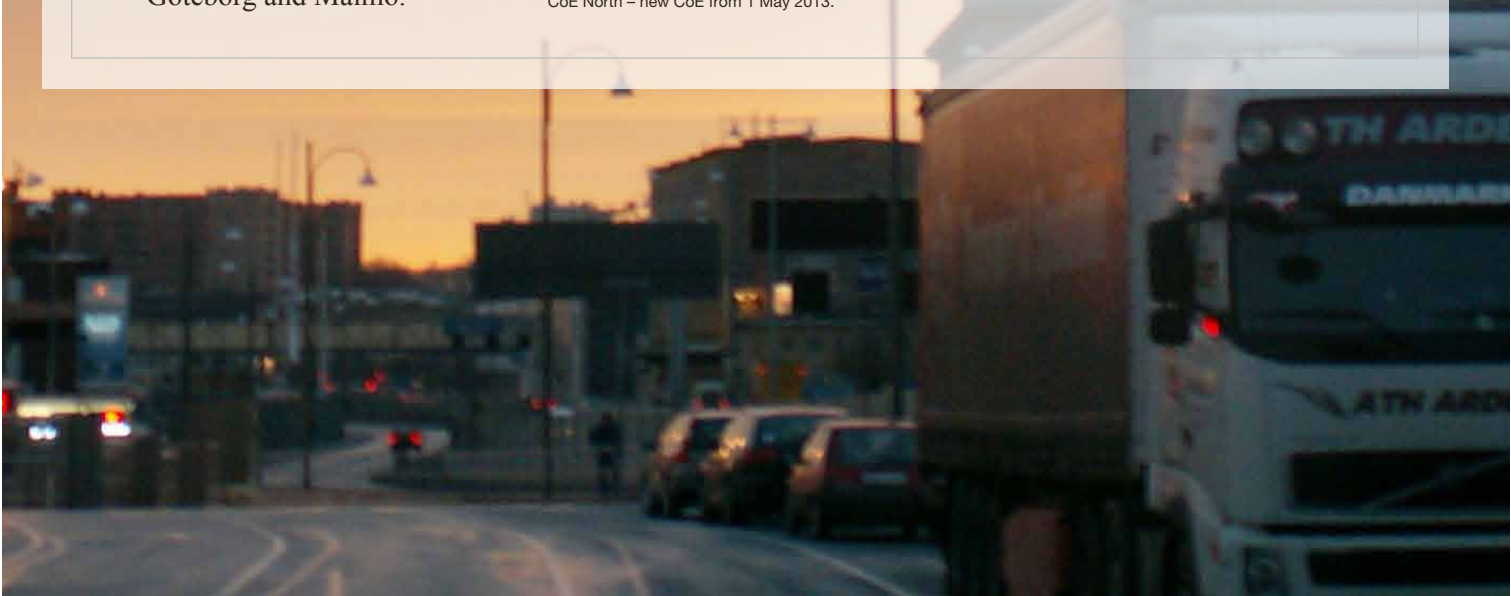
We simplify what is legal. And prevent what is illegal.

Quick facts

- Approximately 2,100 employees.
- Our core activities are divided up in two processes, Managing the Trade and Law Enforcement.
- We operate throughout the country, but are concentrated at border locations with large goods flows, in particular Stockholm, Göteborg and Malmö.



* CoE North – new CoE from 1 May 2013.





Swedish Customs works towards simplifying the regulations and legislation that apply to trade with countries outside the EU. Our greatest opportunity to influence comes through participation in EU Commission committees and working groups dealing with issues such as trade and customs. Swedish Customs also participates in the global work on customs issues, for example as a member of the World Customs Organisation.

An efficient and modern public agency

Every day, hundreds of thousands of persons and goods pass across Swedish borders. Sweden exports nearly two thirds of its total industrial production. Every day, companies and private individuals import products that we feel to be necessary for everyday life.

Irrespective of whether you as an entrepreneur import a container with home electronics, or if you as a traveller buy a camera on your holiday abroad, you may have to pay customs duty, tax and other charges. It is the task of Swedish Customs to ensure that these charges are paid. It is our duty to carry out our mandate in an efficient, legally correct and secure manner.

We can help you with information about the rules that apply when you shop in or trade with countries outside the EU. By helping you to do things correctly from the start, we simplify within the flow of goods. We have made it possible for companies to submit information electronically in conjunction with import and export, and we have developed automatic clearance. We shall be available to provide information and service, which

shall be easy to access and easy to understand. You can contact us via www.tullverket.se, by email or by telephone. We are present where we are needed and provide the greatest benefit.

But the large legal flow of goods is also used for smuggling illegal goods which can harm us and make our society unsafe. Swedish Customs not only has a duty to prevent narcotics from coming across Swedish borders, but also weapons, dangerous chemicals, infected animals and plants and pirated goods.

Sweden is part of a customs union together with the other EU countries. Within the union, duties and other trade barriers have been removed and common duties introduced against those countries that are not part of the union. In principle, this means that you should only pay duty and other charges for goods bought in or from countries outside the EU. Exceptions are regulated in special agreements. The EU can enter into trade agreements with countries outside the union, and introduce penal duties against price dumping and central government support.



The customs officers within Managing the Trade inform and train companies about customs knowledge, clear and check goods in conjunction with border crossings and check customs declarations in order to ensure that import regulations have been complied with and the right charges have been paid.

Simplifying what is legal and preventing what is illegal

Swedish Customs' preventative work in the trade of goods consists of information and training, for example via www.tullverket.se, courses tailored to companies or through participation in trade fairs. We issue and inform about various types of permits that companies need in their customs handling. We also provide information to private individuals about import regulations relating to travel and Internet purchases.

In conjunction with border passage, we clear goods and carry out goods checks. We can also examine customs declarations and carry out customs audits in order to check that the correct amounts have been paid and that regulations governing import and export of goods have been complied with. We also carry out excise duty checks to make sure that excise duty has been paid on alcohol, tobacco and energy products transported inside the country.

We work to simplify legal trade and reduce the administrative burden on business. The simplification work includes developing recipient-adjusted information and services and

to work towards effective legislation within the customs area.

Whitin our law enforcement work we monitor and control traffic to and from other countries so that regulations governing the import and export of goods are complied with. In conjunction with this, we work to prevent, discover, obstruct, investigate and prosecute customs-related crime. The work focuses on disabling or disrupting organised crime and fighting economic crime. Combating narcotics has the highest priority.

Border protection officers, customs investigators and customs prosecutors work together in order to combat criminal activities as effectively as possible. Suspected smuggling crimes are investigated by specially trained customs officers, who ensure that prosecutors and courts have sufficient documentation for a legally correct assessment of the issue of guilt. The investigations are led by a public prosecutor or, in simpler cases, by Swedish Customs' own preliminary investigation managers or customs prosecutors, who can also decide on fine-based sanctions.

Customs officers within Law Enforcement have the authority to stop, search, interview, investigate and search premises. They also have the authority to take measures against drink driving offences and therefore carry out drink driving checks in conjunction with customs-related contacts with drivers of motor vehicles.



More effective methods give better results

In order to be able to live up to the objectives set by Parliament and the Government for Swedish Customs, we constantly need to develop our working methods. We are concentrating ever more on intelligence, risk analysis and preventative work to become even better at making the right choices during checks and thereby not interrupt the flow of goods unnecessarily.

The operation and competence of Swedish Customs constitute an important link in the foreign trade chain. Trade with other countries is a crucial factor in Sweden's economy and employment. Therefore our work to facilitate matters for companies with foreign trade is important.

Within the EU, there is a common certification programme, AEO (Authorised Economic Operator). All member countries use the same certification programme in order to ensure both increased security in the world and also efficient and uniform customs handling within the EU. Through Swedish Customs certifying companies, and thereby approving a high level of quality in the companies' information and goods flows,

the companies can receive simplifications in their customs handling. Within the EU there are several other common systems that make customs handling more efficient and secure, such as pre-arrival and pre-departure information of import and export goods, and also EORI, a system with identification numbers for all customs operators within the EU.

We are constantly working on improving working methods and processes in order to achieve good results, at the same time as we are using our resources in a cost-effective manner. Within Law Enforcement, we use various technical aids, such as X-ray and fibre optics, and in the work with our narcotics detector dogs we are constantly trying to develop new, efficient ways of working.

On a more long-term level, we have developed a set of goals that describe the desired position for our operations in 2015. The set of goals forms the framework for how we plan and develop the operation strategically. Focus is on internal efficiency, but the goals also include prioritisations for the operational activities.

In the checks that import and export regulations are complied with Swedish Customs has a special focus on protecting our society from threats against health, environment and security. Examples of goods that fall into these categories are pharmaceuticals, child pornography, environmentally hazardous waste, protected animals and plants and war materials.



Together we are stronger

Cooperation is a crucial success factor in Swedish Customs' work to simplify what is legal and prevent what is illegal. This applies to cooperation with companies and other public agencies within Sweden and within the EU, but also globally.

On a national level, Swedish Customs cooperates with the Swedish Board of Agriculture, the Swedish Tax Agency, the National Food Administration, the National Board of Trade and chambers of commerce, among others. As a border agency, Swedish Customs checks the correctness of documentation that other public agencies require to be correct when crossing borders, for example when someone brings a dog into Sweden, or when a company imports foods. We also cooperate with trading companies, shipping agents, customs agents, carriers and others working with trade with countries outside the EU. We participate in the considerable work within the EU to modernise customs legislation and working methods.

Swedish Customs cooperates with other law enforcement agencies, such as the Police, the

Swedish Prosecution Authority and the Swedish Tax Agency. Cooperation takes place on both operational and strategic level. The number of complicated investigations has increased, which also places demands on rapid and efficient contacts with foreign customs authorities.

International cooperation partners are, for example, Europol and OLAF (The European Anti-Fraud Office) and, by means of the Nordic Police and Customs Cooperation, Swedish Customs has direct contact with Nordic personnel around the world. The Swedish law enforcement agencies take part on an ongoing basis in international operational measures against organised crime.

Within the framework for Samverkan Mot Tullbrottslighet, SMT, (Combating Customs Crime, MoU) Swedish Customs signs agreements with companies to prevent customs crime. We inform companies about how to avoid being used by criminal operators, such as smugglers. The companies become better at discovering risks and can give us tip-offs of suspicious activities.

Swedish Customs is a government authority that manages the flow of goods into and out of Sweden and helps make society safer and ensures competition neutral trade. We simplify legal trade and prevent illegal trade by offering flexible customs procedures for international trade, simple border passage for travellers and effective border protection. Our mandate is from the Swedish Parliament and Government. Swedish Customs was founded in 1636.



P.O. Box 12854, SE-112 98 Stockholm
Ph. +46 771 520 520
www.tullverket.se